



Poland

Interviews with workers: EU27 - (25 688 interviews) | Poland - (1 012 interviews)
 Fieldwork dates: 31.03 – 14.04.2025 | Methodology

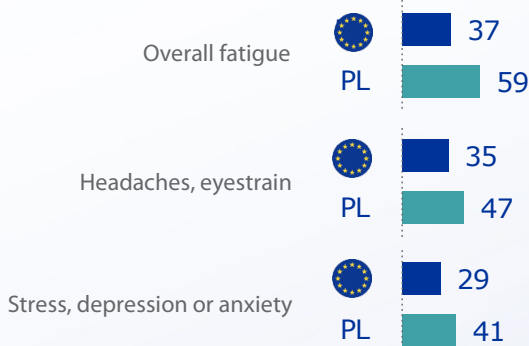
Psychosocial risks at work

B1 Would you say that at work you are exposed to the following factors? (% 'Yes')



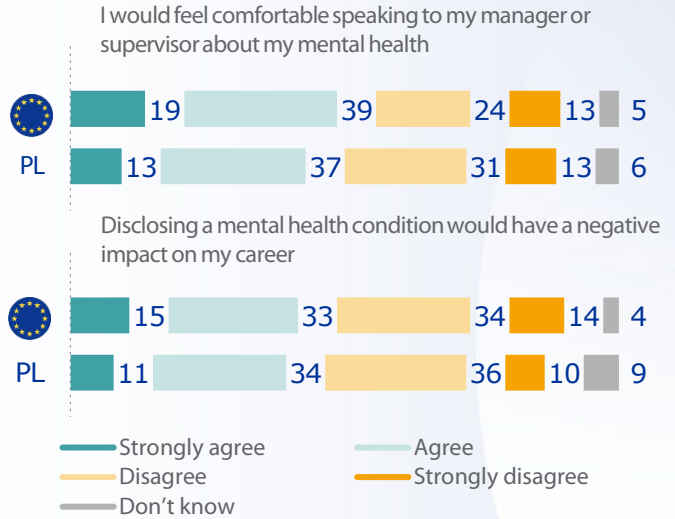
Work-related health problems

C1 In the last 12 months, have you experienced any of the following health problems caused or made worse by your work? [MULTIPLE ANSWERS] (% EU Top 3)



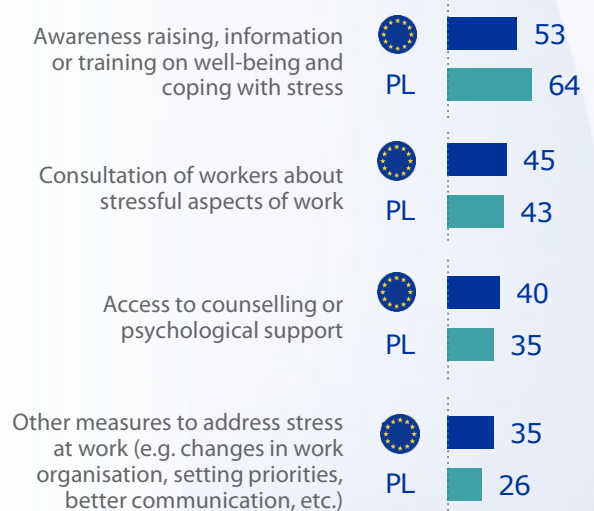
Talking about mental health

E2 Do you agree or disagree with the following statements on stress and mental health in your workplace? (% 'Total agree')



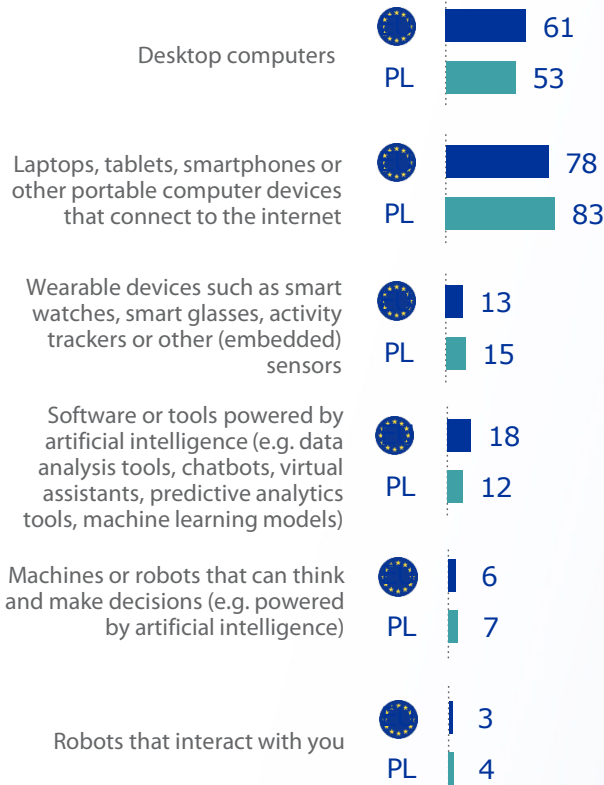
Initiatives to prevent mental health issues

E1 Are any of the following initiatives available in your workplace? (% 'Yes')

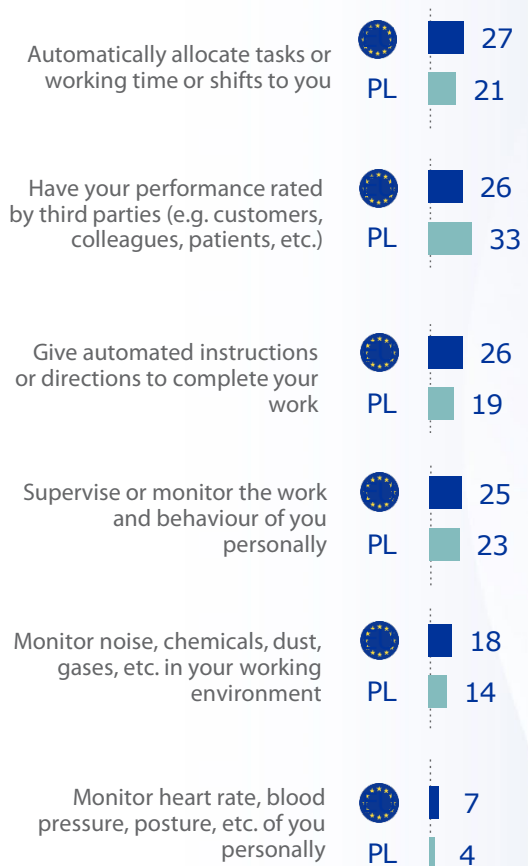


Use of digital technologies in the workplace

DX7 Do you use any of the following digital technologies for your main job? (% 'Yes')



A2 To your knowledge, does the organisation where you work use digital technologies to...? (% 'Yes')



Risks related to digitalisation

A1 Would you say that the use of these digital technologies in your workplace...? (% 'Yes')

